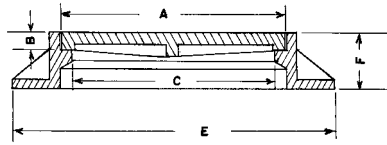


**R-1800 to 1801 Series
Frame, Solid Lid**

Heavy Duty



Illustrating R-1800-C with Square Base flange

Catalog No.	Dimensions in inches					Grate Alt.
	A	B	C	E	F	
Square						
R-1800-A *	20 x 20	1 3/4	18 x 18	31 x 31	5	R-3430
R-1800-B	23 1/2 x 23 1/2	1 1/2	22 x 22	28 x 28	4	R-1878-A5G
R-1800-C *	24 x 24	2	22 x 22	35 x 35	6	R-3210-A
R-1800-D +	32 x 32	1 1/2	30 x 30	36 x 36	6	-
R-1800-E **	50 x 50	1 3/4	48 x 48	59 x 59	8	R-3438-A
Rectangular						
R-1801-A	11 1/2 x 14 3/4	1 1/4	10 x 13	19 x 22	4	
R-1801-B	14 1/2 x 21 1/2	2	13 x 20	23 x 30	5 1/2	R-3460-A
R-1801-C	18 x 30	2	16 x 28	26 x 38	8 1/2	-
R-1801-D	18 x 36	2	16 x 34	28 x 46	7	-
R-1801-E	23 1/2 x 35 1/2	2	22 x 33	34 x 46	6 1/4	R-3416
R-1801-F	23 7/8 x 35 3/4	1 3/4	22 x 34	36 x 48	9	R-3455-C
R-1801-G ***	36 x 48	1 3/4	33 x 45	42 x 54	5 1/2	R-3457-C2

* Furnished with round base flange if specified.

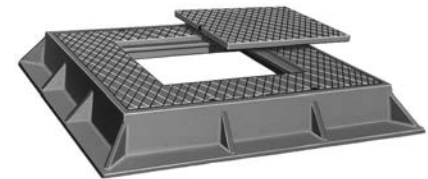
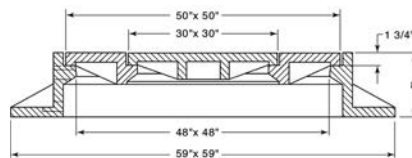
** Lid furnished in two pieces.

*** Lid in two pieces (also frame).

+ Built-up / slab frame

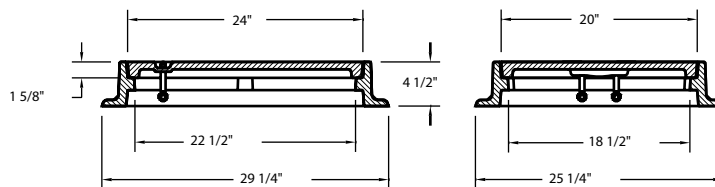
**R-1860-A
Large Frame, Solid Lid
with Removable Center Lid**

Heavy Duty



**R-1863
Frame**

Heavy Duty



Frame is reversible for slab installation.